



No. 333 Huaihai Middle Road  
Shui On Plaza 1206-A12 Huangpu District  
Shanghai 200021  
China

3A Simon Road #02-00  
545892  
Singapore  
Phone: +65 6528 3145 / +65 9069 9235  
Fax: +65 6528 3145  
Email: sales@covilla.com

China • Hong Kong • South East Asia



Exterior Fluorescent Lighting

Located safely away from harmful fumes and vapors, the fluorescent lighting system provides excellent task lighting.

Downdraft Bypass

Air flows through the bypass area with increased volume and less resistance for quieter operation.

Gasketed Access Panel

Soft PVC gasket on the interior access panel eliminates contaminant seepage into sidewall.

Safety Sash Features

Higher-rated safety glass offers greater protection against fires and explosions.

Remote Controlled Fixtures

Remote controlled fixtures for safety access of services. All are color coded for safety measures.

High Sight Line

Taller 36-inch sash sight line provides better view of the hood interior.

Chemical Resistant Finish

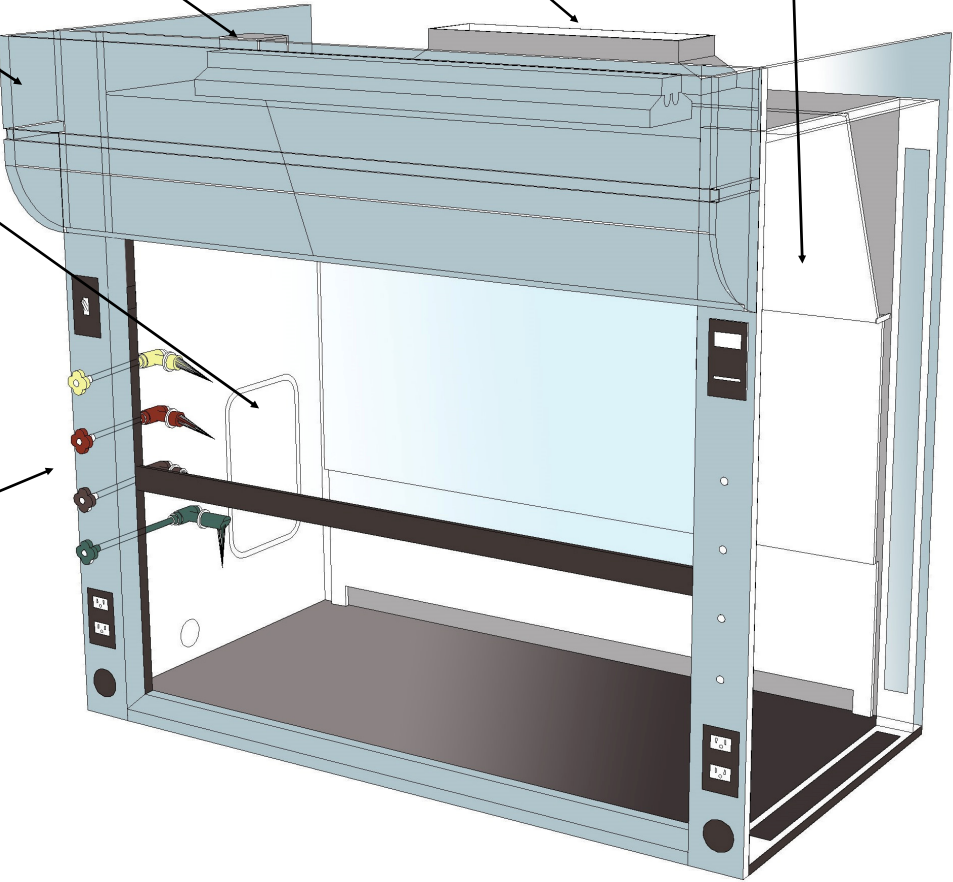
1-1.5 mil powder coat finish has excellent chemical and abrasion

Unique Exhaust Collar Design

A contoured rectangular exhaust collar provides more vertical space, reduces noise levels and conserves energy by maintaining lower static pressure.

Liner Materials

Fiber reinforced resin liner with high chemical resistant, low flame spread and high tensile strength. White colored for enhancing lighting condition.

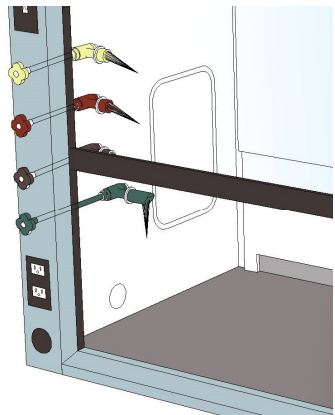



Metal-Free Interior

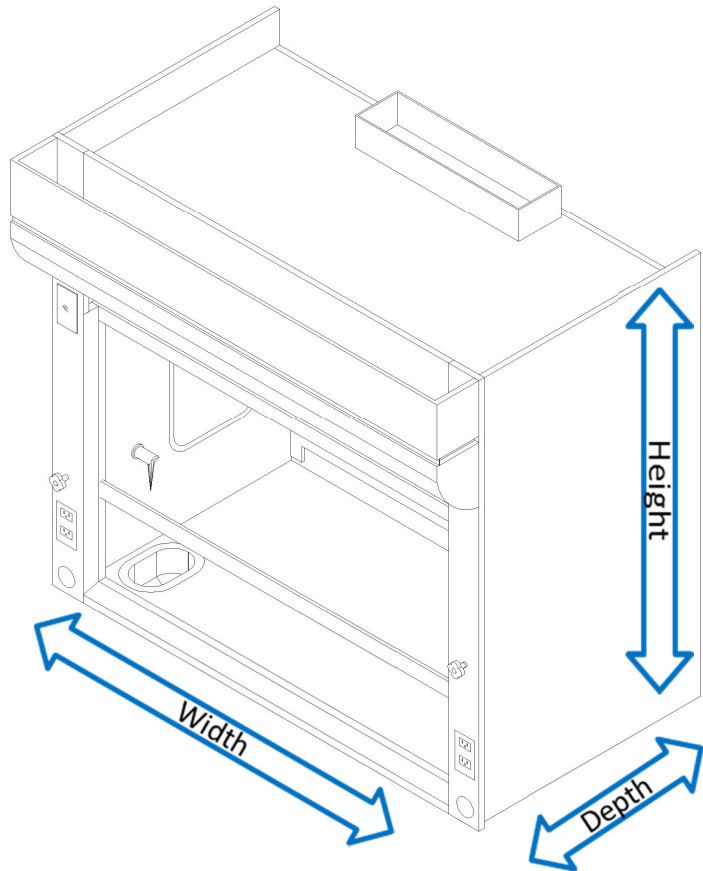
Liner is resistant to high temperatures, meeting flame retardant specifications. Hood interiors have no metal brackets, angles or screw heads that can rust or corrode.

Chain & Sprocket Sash Support System

The sash counterbalance system features a chain and sprocket sash support system with alignment shaft and sash leveling system.

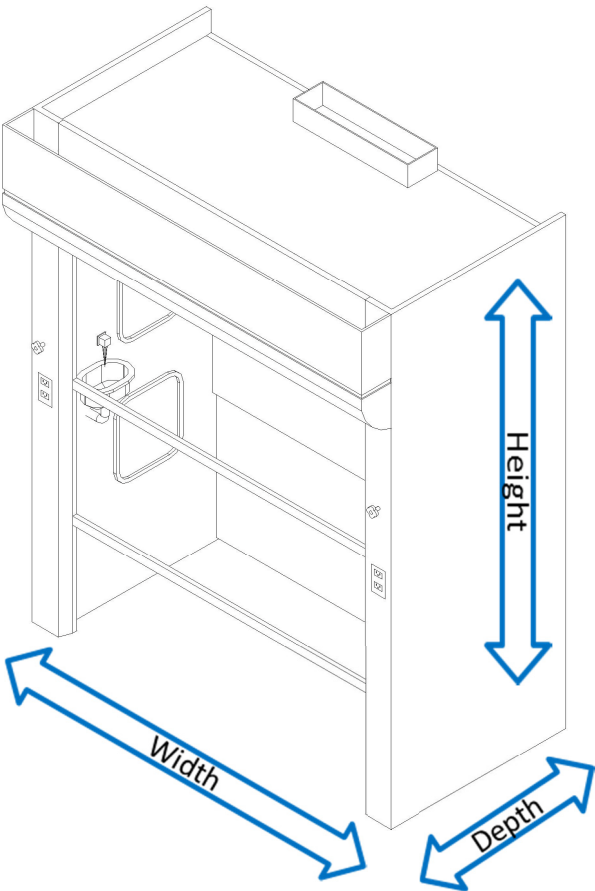



BENCH TOP FUME HOOD



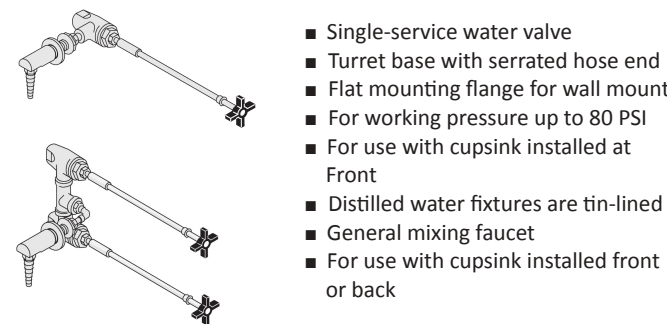
PRODUCT NUMBERS			
DEPTHS			WIDTH
31.25"	37.25"	43.25"	
BTFH485431	BTFH485437	BTFH485443	48"
BTFH605431	BTFH605437	BTFH605443	60"
BTFH725431	BTFH725437	BTFH725443	72"
BTFH965431	BTFH965437	BTFH965443	96"
BTFH1205431	BTFH1205437	BTFH1205443	120"
BTFH1445431	BTFH1445437	BTFH1445443	144"
Height of bench top fume hoods: 54"			
Custom sizes: Call and tell us your needs			
For variable air volume hoods add -VAV to end of part number.			

FLOOR MOUNTED FUME

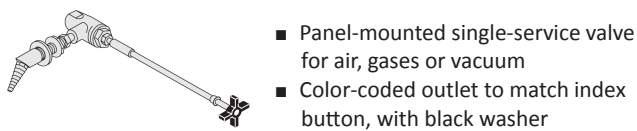


PRODUCT NUMBERS			
DEPTHS			WIDTH
31.25"	37.25"	43.25"	
WIFH488931	WIFH488937	WIFH488943	48"
WIFH608931	WIFH608937	WIFH608943	60"
WIFH728931	WIFH728937	WIFH728943	72"
WIFH968931	WIFH968937	WIFH968943	96"
WIFH1208931	WIFH1208937	WIFH1208943	120"
WIFH1448931	WIFH1448937	WIFH1448943	144"
Height of floor mounted fume hoods: 89"			
Custom sizes: Call and tell us your needs			
For variable air volume hoods add -VAV to end of part number.			

Remote Control Fixtures

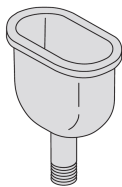


PRODUCT NUMBERS	SERVICE
L3185W-5	Cold water
L3185W-5-HW	Hot water
L3185WTL-5	Distilled water
L3185S-5-Steam	Steam

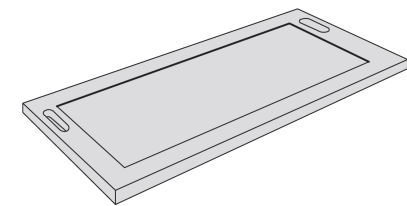


PRODUCT NUMBERS	SERVICE
L3185N-LR-GAS	Gas
L3185N-LR-AIR	Air
L3185N-LR-VAC	Vacuum
L3185N-LR-N2	Nitrogen
L3185N-LR-O2	Oxygen

Polypropylene Oval Cupsink CS080507



- 200 mm x 135mm oval cupsink  
97mm x 170mm I.D.
- Overall height – 176mm



- Epoxy resin work surface are 1-1/4" (32mm) thick with 3/8" (10mm) dish
- Indicate behind part number for cupsink cutout location
- LF-Left-Front ; LR-Left -Rear ; RF-Right-Front  
RR-Right-Rear

PRODUCT NUMBERS			
DEPTHS			WIDTH
29-1/4 " (743mm)	35-1/4" (895mm)	41-1/4 "(1048mm)	
FHEP4829	FHEP4835	FHEP4841	48" (1219mm)
FHEP6029	FHEP6035	FHEP6041	60" (1524mm)
FHEP7229	FHEP7235	FHEP7241	72" (1829mm)
FHEP8429	FHEP8435	FHEP8441	84" (2134mm)
FHEP9629	FHEP9635	FHEP9641	96" (2438mm)

Fume Hood Air Flow Monitor - AFA500



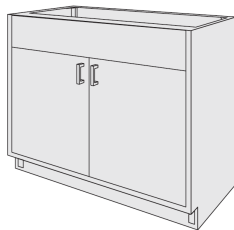
- Continuously monitors flow based on internal hood pressure and has field adjustable set points that will activate the alarm signal
- Operations manual is provided
- Features:
  - Low air alarm relay output
  - Simplified push-button calibration
  - Relay input for night setback to mute audible alarm
  - Remote airflow sensor (optional)

Fume Hood Air Flow Monitor - AFA1000



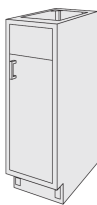
- Continuously monitors flow based on internal hood pressure and has field adjustable set points that will activate the alarm signal
- Operations manual is provided
- Features:
  - Digital display of face velocity
  - Push –button calibration and configuration
  - LED alarm indicators
  - Three programmable output relays
  - Three configurable inputs
  - Com ports for local or network connection

Steel Base Cabinets for Fume Hoods



- Flush front panel above cupboard
- Height of the cabinet : 35-1/4"
- Depth of the cabinet : 21-5/8"

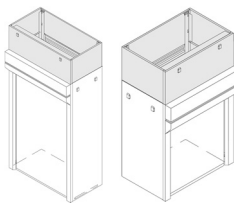
PRODUCT NUMBERS	WIDTH
FNC303522	30" (762mm)
FNC363522	36" (914mm)
FNC423522	42" (1067mm)
FNC483522	48" (1219mm)



- For use below cupsink
- Flush front panel above cupboard
- Use two or more of these base cabinets to support fume hood superstructure
- Height of the cabinet : 35-1/4"
- Depth of the cabinet : 21-5/8"

PRODUCT NUMBERS	WIDTH
Right-Hinged	
FNC123522R	12" (305mm)
Left-Hinged	
FNC123522L	12" (305mm)

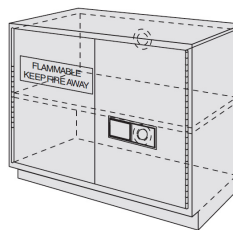
Enclosure Panels



- Enclosure panels for front and both sides of fume hood. Encloses space between top of superstructure and ceiling.
- Made of steel, finished to match hood superstructure.

PRODUCT NO.	CAPACITY	Hood Depth	Height
FFEP[W][H][D] <small>Full enclosure panel</small>	48 / 60 / 72 / 96 / 120 / 144	31 / 37 / 43	To specify
FFCE[W][H] <small>Front enclosure panel</small>	48 / 60 / 72 / 96 / 120 / 144	-	To specify
FLCE[D][H] <small>Left enclosure panel</small>	-	31 / 37 / 43	To specify
FRCE[D][H] <small>Right enclosure panel</small>	-	31 / 37 / 43	To specify

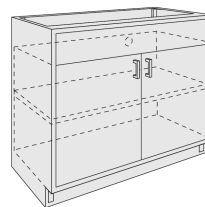
Steel Flammable Liquid Storage Cabinet



- With flush panel
- Double hinged doors
- Shelf adjustable in 1" (25mm) increments.
- Includes lock
- Two vent outlets at rear of cabinet
- Non-removable warning label
- "Flammable-Keep Fire Away" on door.
- Height of the cabinet : 35-1/4"
- Depth of the cabinet : 21-5/8"

PRODUCT NO.	WIDTH	CAPACITY
Manual-Closing Doors		
FSC303522	30" (762mm)	15 gal. (56.8 l)
FSC363522	36" (914mm)	18 gal. (68.1 l)
FSC423522	42" (1067mm)	24 gal. (90.8 l)
FSC483522	48" (1219mm)	27 gal. (102.2 l)

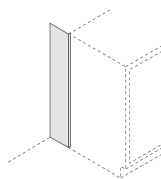
Steel Acid Storage Cabinet for Fume



- For storage of corrosive materials
- Flush front panel above cupboard
- Chemical-resistant polypropylene lining and shelf surface
- Vent access at rear
- No not use under front mounted cup sinks
- Height of the cabinet : 35-1/4"
- Depth of the cabinet : 21-5/8"

PRODUCT NUMBERS	WIDTH
ASB303522	30" (762mm)
ASB363522	36" (914mm)
ASB423522	42" (1067mm)
ASB483522	48" (1219mm)

Steel Base Cabinets for Fume Hoods



- Rear filler panel
- For closing service space at rear of base cabinets

PRODUCT NUMBERS	WIDTH
EFP073500	7-3/8" (18.7mm)
EFP133500	13-3/8" (34.0mm)
EFP193500	19-3/8" (49.2mm)